

09-10

Policies and Regulations for Athletics



SPORTSMANSHIP PLEDGE

As student-athletes, coaches and spectators at this Archdiocese of Milwaukee event, we pledge to:

- ★ Display Christian behavior.
- ★ Show respect for student-athletes, coaches, officials and spectators.
- ★ Refrain from profanity, racial or ethnic comments, harassment or taunting of student-athletes, coaches, officials and spectators.
- ★ Encourage good sportsmanship by student-athletes, coaches and spectators.
- ★ Take responsibility for our actions.

POLICIES

EXTRA-CURRICULAR ACTIVITIES

P6145

The principal has the ultimate responsibility for all extra-curricular school activities. The immediate supervision of an activity may be delegated to qualified staff members or competent adults. A job description shall be written to provide the parameters of this delegation. Parents and other adults who serve as coaches, moderators, and chaperones are accountable to the principal in all activities that are school based.

The pastor has the ultimate responsibility for all extra-curricular activities in parish-based programs. The immediate supervision of an activity may be delegated by the pastor to a qualified staff member or other adult; A job description shall be written to provide the parameters of this delegation. Parents and other adults who serve as coaches, moderators and chaperones are accountable to the pastor or his delegate in all activities that are parish-based.

It is suggested that pastors confirm/approve all candidates to the local athletic boards before elections/appointments take place.

ATHLETIC PHILOSOPHY P6145.2(A)

A school/parish athletic program must take into account the ever changing society we live in today. Athletics have taken on a glamorized existence of their own. Our elementary student athletes are being trained at earlier ages than ever before. They are often



pushed beyond the capabilities of their maturing bodies. Beyond the physical demands, one must also look at the increasing mental strain being placed upon them. A new flood of research documenting the damage being done to our children and youth is being published daily, not to mention a whole new field of law which is dedicated to sports, its injuries and their prevention.

The Catholic Schools and Parishes recognize the broader focus of sports programs which have gotten out of control. Catholic Schools and Parishes strongly believe the primary purpose of a school is to offer instruction in basic knowledge. Wisconsin statute 118.165 states a private school "provides a sequentially progressive curriculum of fundamental instruction in reading, language arts, mathematics, social studies, science and health." In a Catholic school and parish program religious education has a prime instructional role. Additionally, supplementing the education process is a program of extracurricular activities. Such activities play an important but secondary role in the education of our children substitute for primary skills.

POLICIES

The Catholic school and parish athletic programs offer an opportunity for young people to associate with dedicated adults who not only foster the development of athletic skills but also serve as role models of Christian living. The true goals of athletic competition are sportsmanship, leadership, and team play which develop physical skills. The Church is working diligently to protect our children and youth against exploitation by overzealous adults who wish to transform an activity of "enjoyment" into an area of "professionalism." The "win at all cost" philosophy will not be tolerated. Over-working the participants in practice not only lends itself to physical strain and a higher probability of injury but to mental exhaustion as well.

The Catholic schools and parish sports programs call for responsible control and limitation of the time and energy expended on extracurricular activities. This purpose imposes on the administrators and directors of Catholic schools and parishes the obligation to select and prepare adults who will fit the needs as role models for our youth.

ATHLETICS P6145.2(B)

Interscholastic athletics can be of value as a supportive element to the total education process. This process concerns the total person, the person's growth as an individual - spiritually, mentally, emotionally, physically, and socially.

Athletics should provide:

1. A learning experience.
2. A positive base for Christian development.
3. An understanding of competition, emphasizing sportsmanship and teamwork.
4. An opportunity for all participants to develop and share knowledge and skills appropriate to their level.
5. The interscholastic athletic program should be looked upon as the pinnacle and not the foundation of a school's physical education endeavors. A school should provide, first a program of physical education for all children, second an intramural sports program for all who desire some participation in competitive sports, and finally an athletic program of competition in the skill sports.



GENERAL REGULATIONS: R6145.2 ELEMENTARY SCHOOLS & PARISH BASED PROGRAMS

1. No elementary school student may participate in any phase of a formal high school (grades 9 -12) athletic program. This includes practice sessions.
2. The following 7 sports are regulated by the Archdiocese in their own season only:
Baseball Basketball Football Soccer Softball Track Volleyball

The sport seasons are defined as follows:

- a. Fall season = Football, Soccer and Volleyball: August 15 - November 7
- b. Winter season = Basketball and Volleyball: November 8 - March 23
- c. Spring season = Soccer, Baseball,
Softball and Track: March 24 - End of School Year

All practices and games (independent, league and tournament) must take place during the defined sport season. This prohibits all schools and parishes from providing coaches, equipment, school/parish names, liability insurance, and practice and/or



game facilities to their school/parish based teams to continue play during the summer in leagues or tournaments in any sport regulated by the Archdiocese. This includes any organized activity such as practices, drills, scrimmages, games, etc.

A game is defined as competitive play between two teams of different schools during which time and score are kept. A scrimmage is defined as play between two teams of different schools during which no time or score is kept and during which coaches may interrupt action to give coaching advice. To compete/play is defined as participation in any practice, tryout, game or scrimmage under the supervision of a coach.

Try outs and Scrimmages are considered a practice.

3. A student-athlete may participate with a non-archdiocesan team in the same sport during the season provided that the student's priority and commitment is with the parish/school team, and the student maintains the eligibility requirements established by the school administration and published locally.
4. Combining teams from 2 or more schools/parishes is allowed only if there is a shortage of players at a specific grade, only after all internal options have been exhausted and only with schools/parishes that currently sponsor and administer active athletic programs in Grades 5-8.
5. Written authorization from each pastor/principal of the respective parishes/schools, which are in reasonably close geographical proximity to one another, is needed to field a combined team. Merged teams must have league approval to compete in their respective league. Form 6145.2g should be used to request approval of the combined teams.
5. Only teams comprised of players representing a single school/parish or an authorized combined school/parish and in existence as a team during the entire sport season are eligible to participate in school or parish sponsored tournaments. Select all-star, club or AAU type teams should not be allowed to participate in these tournaments.

GENERAL REGULATIONS: ELEMENTARY SCHOOLS & PARISH BASED PROGRAMS

6. Official player rosters with a place for the verification signatures of the pastor and/or principal, athletic coordinator and coach are to be utilized for all league and tournament play. (See form 6145.2(h)).
7. A parish-based team is a team composed of children enrolled in the Catholic school or the religious education program. Participation on a parish-based team requires:
 - a. The parent(s)/guardian must be registered members of the parish/school;
 - b. The student must:
 - i. attend the parish school; or
 - ii. attend the parish religious education classes regularly.
8. A school-based team is a team composed of only students attending a Catholic school. Participation on a school-based team requires:
 - a. The parent(s)/guardian must be registered members of the parish/school;
 - b. The student must attend the parish school.
9. Requirements for participation apply equally to students in the parish school and in the religious education program. Eligibility to compete will be determined by the students' academic record, effort, attendance and conduct in school (whether Catholic or public), and in religious education classes. Determination of such eligibility criteria will be made by parish and school administration after consultation with staff members and appropriate committees. Written criteria and process shall be published in the parent/student handbook and other forms of communication.
10. Local administrators and athletic associations shall create policies that provide for participation by all team members in all games.
11. A team's entire competitive season must be completed before any member of that team may begin participation in another sport. This restriction applies to practices as well as games or matches. EXAMPLE: A player participating with the football or soccer team must complete the entire football or soccer season before participating in any practices, games, matches, scrimmages, etc. for another sport ... such as basketball or volleyball.
12. Competitive athletic programs are to be limited to grades 5, 6, 7, and 8. A student is eligible only to compete for four years, one year at each of his/her grade level of school. Students must play at their own grade level, unless classes are combined to form one team. Team members must meet the following age requirements as of September 1st: 5th GRADE: Under 12 years; 6th GRADE: Under 13 years; 7th GRADE: Under 14 years; 8th GRADE: Under 15 years



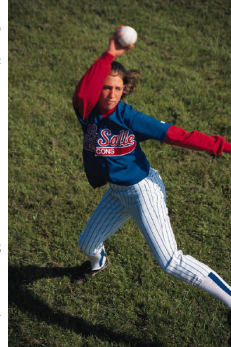
GENERAL REGULATIONS: ELEMENTARY SCHOOLS & PARISH BASED PROGRAMS

13. There is to be no practice nor competition during the hours the involved student's school or religious education classes are in session.
14. Travel to games must be kept to a reasonable distance especially on days preceding a school day. Therefore, games scheduled at later evening hours are discouraged on days preceding school days. The player's health and education must be safeguarded by the school.
15. No student may participate in any phase of a school/parish sponsored interscholastic athletic program without a physical examination by a licensed physician every two years. A physician exam taken April 1st and thereafter is valid for the following two school years; a physical examination taken before April 1st is valid only for the remainder of that school year and the following school year.
16. All appropriate forms related to athletics must be complete and returned before a student may participate in any try-outs, practices or games. (Included are the Medical Information & Emergency Consent Form, the Parent's Risk Acknowledgement and Consent Form, and the Student Physical Examination Form, and both the Student Athlete and Parent/Guardian Sportsmanship Pledges).
17. The Sportsmanship Pledge sign provided to parishes, schools and leagues must be displayed at all athletic venues connected to the Archdiocese.
18. Players must have health insurance; parishes, schools and the archdiocese do not provide such insurance.
19. Schools, parishes and leagues are responsible to insure that appropriate first aid supplies, other medical equipment and an accessible telephone are available at all practices and games.
20. Title IX of the Civil Rights Act requires that equal opportunity be provided to both sexes to participate in athletics. It requires that all physical education classes be coeducational, however, it allows separation during the participation in contact sports and explicitly permits grouping of students by ability.
21. Leagues or conferences provide a structure that helps to make athletic programs more effective. It is recommended that all teams belong to a league or conference. If possible, the league or conference should be organized on an area-wide or geographical basis.

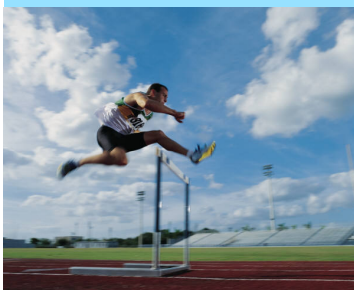


GENERAL REGULATIONS: ELEMENTARY SCHOOLS & PARISH BASED PROGRAMS

21. Each league or conference should have a Board of Control to establish game rules, procedures, and discipline within the league or conference which are in compliance with Archdiocesan policy and regulations.
- a. Board membership can and should consist of principals, athletic directors, coaches and/or other qualified persons.
 - b. The Board of Control shall establish specific regulations for each sport in conformity with the policies and regulations of the Archdiocese. It is strongly recommended each league develop, with its members, a code of conduct for players, coaches and fans.
 - c. The Chairperson of the Board of Control shall act as the executive officer of the league or conference.
 - d. The Board of Control shall establish schedules for each sport at the beginning of the sport season. Such schedules shall include the time of the events.
 - e. The chairperson of each league's Board of Control shall communicate all schedules, rules, changes, etc. to the appropriate parish and/or school administrators, and to the Associate Director for Student Services.
 - f. League members are entitled to one vote per school/parish.
23. Coaches provide a very worthy service to a school. They must remember that they play an important part in the development of the student-athletes under their charge. Coaches must conduct themselves as Christians at all times. They must not interfere with or impede, and must cooperate with the school's educational program. Imprudent actions on the part of the coaches are subject to disciplinary action by the principal/pastor and the league Board of Control.
24. There is to be no practice nor competition without competent adult supervision. An adult is a person who is 21 years of age. It is highly recommended that there be at least two adults present in a supervisory role at all times.
25. All coaches, whether a Head Coach, an Assistant Coach, or any adult actively involved in working with the players shall be certified. Head coaches must be at least 21 years of age; assistant coaches must be at least 18 years of age and a high school graduate.
- a. The training programs for certification shall include:



GENERAL REGULATIONS: ELEMENTARY SCHOOLS & PARISH BASED PROGRAMS



- i. A basic or core preparation in the Catholic/Christian philosophy of coaching, risk management, and the prevention and treatment of injuries. Two clock hours.
 - ii. Training in the specific sport to include rules, practice organization, skill development and coaching behavior. Three clock hours (minimum).
 - iii. Training in the Archdiocesan “Protecting All God’s Children” program as it currently is required for volunteers who work/supervise child and youth on a regular basis.
 - b. The basic or core preparation is required prior to assuming coaching duties. Completion of the sport specific training requirement shall be accomplished within one year of the inception of coaching duties. The Archdiocesan “Protecting All God’s Children” training requirement shall be completed before starting coaching duties. Once these elements of certification are in place, a coaches certification status is considered complete for life, except for other requirements that are listed in this section.
 - c. The local pastor/principal shall be accountable for monitoring coaches and maintaining certification records. The record keeping may be delegated by the pastor/principal.
 - d. Annually all employees and volunteers shall receive training in the treatment of Blood borne Pathogens.
 - e. Archdiocesan policies related to criminal background checks are the responsibility of the pastor/principals. All coaches and athletic personnel must have an initial criminal background check and a subsequent review every five years.
 - f. Coaches should be made aware of the responsibilities of adults who supervise children and youth as per Archdiocesan policy and regulation 4116.4
26. Whenever possible, athletic teams should be transported to games and tournaments by a parent or guardian , or in a yellow school bus. Coaches are strongly discouraged from transporting minors (other than their own children) to and from games and practices, and making transportation arrangements to games for students when group transport is not provided. In the event that a coach chooses to transport minors, the following conditions must be met for parish employees and/or volunteers using their own vehicle.
- a. A leased or private owned 10-15 passenger van may not be used to transport school aged children (K-12th grade) for athletic events.
 - b. The driver must be 21 years of age or older.
 - c. The driver, must have a valid, non-probationary driver’s license and no physical disability that may impair the ability to drive safely.

GENERAL REGULATIONS: ELEMENTARY SCHOOLS & PARISH BASED PROGRAMS

- d. The vehicle must have a valid registration.
- e. The vehicle must be insured for minimum limits of \$100,000 per person/\$300,000 per occurrence.
- f. Completion of the Volunteer Driver Information Sheet.

With the exception of emergencies, any coach who feels they might transport students should complete a Volunteer Driver Information Form. Refer to Archdiocesan Policy & Regulation 3541, 3532.1, and 6153 for more detailed information.

- 27. The official playing rules used for each sport shall be those published by the National Federation of State High School Associations. Adaptations and/or exceptions to these rules may be granted -- upon request of a league or conference -- by the Archdiocesan School Office.
- 28. Appropriate sanctions shall be applied toward teams and/or individuals not in compliance with Archdiocesan policies and regulations relating to athletics. Sanctions to be considered include, but are not limited to:
 - a. Non-participation in leagues.
 - b. Forfeiture of games.
 - c. Removal of parish/school endorsement, use of parish/school name, logo, insignia, team name, and use of physical facilities and equipment.
 - d. Loss of funds raised in the name of parish/school athletics.
 - d. Loss of liability coverage under the Archdiocesan insurance.
 - e. Removal from positions of responsibility within the parish/school athletic structure.
 - g. Declaration of player ineligibility in league games and parish, school or diocesan-wide tournaments.
 - h. Declaration of team ineligibility in league games and parish, school, or diocesan-wide tournaments.
- 29. In keeping with the Archdiocesan Code of Conduct for priests, deacons and lay ministers, the presence and/or consumption of alcoholic beverages is forbidden at an athletic event where children or youth are present.
- 30. A student who participates in a parish or school (either parochial, private or public) interscholastic athletic program is ineligible to participate in the interscholastic athletic program of another parish/school for one (1) calendar year from the date of registration with the new parish unless there is a change in the primary place of residence of that student's parents or guardian. A student participates in an interscholastic



GENERAL REGULATIONS: ELEMENTARY SCHOOLS & PARISH BASED PROGRAMS

athletic program when he or she plays, practices, tries out or submits written permission to compete.

During the one (1) year period of ineligibility, the student must attend the new parish school or religious education classes. A waiver of this rule may be granted if it is clearly demonstrated that a transfer was not athletically motivated. Form 6145.2(j) shall be used to request a waiver .

31. No sanctioned or organized athletic activities, including league or tournament games, practices, tryouts and scrimmages, involving elementary school and parish teams, may take place on Sundays before 12:00 noon, or on Christmas Eve, Christmas Day, or during the Easter Triduum.
32. All teams from non-Catholic institutions that participate in Catholic leagues must abide by the policies and regulations for Athletics of the Archdiocese of Milwaukee. Non-Catholic teams playing in Catholic sponsored leagues or tournaments, must also provide a certificate of insurance guaranteeing adequate, comparable liability coverage (currently one million dollars) for their team for the dates of participation in league and/or tournament play. It is the responsibility of the individual leagues and the parish/school sponsoring a tournament to inform the non-Catholic institutions of this requirement.



SPECIFIC REGULATIONS

BASEBALL R 6145.21

1. Teams are limited to playing in only one league during the season. (see R6145.2,#3)
2. There must be a minimum of four practice sessions on separate days before the opening game of the season. No inter-school scrimmages or practice games are allowed during this period.
3. No team shall be scheduled for more than 18 games (student as well as school) during the season.
4. A player shall be required to take two calendar days of rest (as pitcher) after pitching a total of seven innings over any three day period unless the additional innings provision applies. The latter provision allows a player to pitch three additional consecutive innings, or total of ten over a three day period, but only if these additional innings occur during the extra inning period of a game and if they directly follow the pitcher's personal seventh inning. Pitching only one ball to one batter or issuing an intentional walk shall constitute one inning on the pitcher's record. This rule shall apply even though a game is called (ended) by the umpire because of darkness, rain, or some other factor before it has become an official contest. Violation of this rule, which applies to season play, shall result in automatic forfeiture of the game in which it took place.



BASKETBALL R 6145.22

1. Teams are limited to playing in only one league during the season (see R6145.2#3)
2. There must be a minimum of four practice sessions on separate days before the opening game of the season.
3. Basketball leagues may not begin play until after Thanksgiving.
4. There must be at least three practice sessions on separate days before the first scrimmage with no more than two inter-school scrimmages allowed before the first game.
5. Fifth and sixth grade teams may be scheduled for a maximum of 2 practices per week, each being no more than 1-1/2 hours in length. Seventh and eighth grade teams may be scheduled for a maximum of 2 practices per week, each being no more than 2 hours in length.
6. Fifth and Sixth grade team may play a maximum of 12 games and participate in three tournaments.
7. Seventh and Eighth grade team may play a maximum of 14 games and participate in four tournaments. (Not counting the Padre Sierra basketball Tournament.)

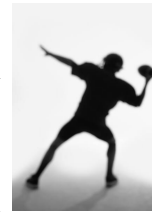


SPECIFIC REGULATIONS

8. Teams may participate in pre-season, mid-season (holiday), or post-season tournaments. No tournament may schedule a team for, nor may any team participate in, more than five games per tournament.
9. The maximum length of the quarters of any game shall be six minutes.
10. A team may not play more than three games in any one week (exception: the weeks of the midseason or postseason tournaments). A team may not play more than two games in one day; a minimum of two hours of rest must be provided between games.

FOOTBALL R 6145.23

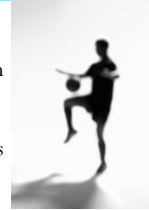
1. Teams are limited to playing in only one league during the season (see R6145.2, #3).
2. There shall be at least ten individual practice sessions on separate days before the first regularly scheduled game and the first three days of practice shall be conducted without protective equipment for conditioning purposes.
3. From August 15th until the official first day of school, 5th and 6th grade teams may have a maximum of four practices per week, each one not to exceed 1½ hours in length. After school begins, 5th and 6th grade teams may have a maximum of three practices per week, each one not to exceed 1½ hours in length.
4. From August 15th until the official first day of school, 7th and 8th grade teams may have a maximum of four practices per week, each one not to exceed 2 hours in length. After school begins, 7th and 8th grade teams may have a maximum of three practices per week, each one not to exceed 2 hours in length.
5. Not more than one inter-school scrimmage is permitted prior to the first regularly scheduled game; seven separate days of practice must precede the first scrimmage. The scrimmage and the first regularly scheduled game must be conducted at least three days (72 hours) apart.
6. No team or individual player may be scheduled for more than nine games and no game may be scheduled until at least the fourth day following the previously scheduled game (Example: Friday to Tuesday or Saturday to Wednesday.)
7. The maximum length of the quarters of any game shall be eight minutes.
8. It is recommended that a physician, EMT or certified athletic trainer be present during all games.



SPECIFIC REGULATIONS

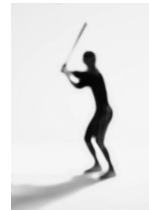
SOCCKER R 6145.24

1. Teams are limited to playing in only one league during the season (see R6145.2, #3).
2. There must be a minimum of four practice sessions on separate days before the opening game of the season.
3. There must be at least three practice sessions on separate days before the first scrimmage with no more than two scrimmages allowed before the first game.
4. Fifth and sixth grade teams may be scheduled for a maximum of 2 practices per week, each being no more than 1-1/2 hours in length. Seventh and eighth grade teams may be scheduled for a maximum of 2 practices per week, each being no more than 2 hours in length.
5. No team shall be scheduled for more than 12 games during the season -- exclusive of tournament participation.
6. Teams may participate in preseason, midseason, or postseason tournaments subject to the following limitations:
 - 5th grade teams - limited to participation in two tournaments
 - 6th grade teams - limited to participation in two tournaments
 - 7th grade teams - limited to participation in three tournaments
 - 8th grade teams - limited to participation in three tournaments



SOFTBALL R 6145.25

1. Teams are limited to playing in only ONE league during the season (see R6145.2#3)
2. There must be at least three practice sessions on separate days before the opening game of the season.
3. There must be at least three practice sessions on separate days before the first scrimmage with no more than two scrimmages allowed before the first game.
4. Fifth and sixth grade teams may be scheduled for a maximum of 2 practices per week, each being no more than 1-1/2 hours in length. Seventh and eighth grade teams may be scheduled for a maximum of 2 practices per week, each being no more than 2 hours in length.
5. No team shall be scheduled for more than 16 games during the season.



SPECIFIC REGULATIONS

TRACK R 6145.26

1. There shall be at least four individual practice sessions on separate days before the first regularly scheduled meet.
2. There must be at least three practice sessions on separate days before the first practice meet with no more than one practice meet allowed before the first scheduled inter-school meet.
3. Teams may be scheduled for a maximum of 2 practices per week, each being no more than 2 hours in length.
4. No team may be scheduled for more than 10 meets.



VOLLEYBALL R 6145.27

1. Teams are limited to playing in only one league during the season (see R6145.2,#3).
2. There must be a minimum of four practice sessions on separate days before the opening match of the season.
3. Fifth and sixth grade teams may be scheduled for a maximum of 2 practices per week, each being no more than 1-1/2 hours in length. Seventh and eighth grade teams may be scheduled for a maximum of 2 practices per week, each being no more than 2 hours in length.
4. No team shall be scheduled for more than 18 matches during the season -- exclusive of tournament participation.
5. Teams may participate in preseason, midseason, or postseason tournaments subject to the following limitations:
 - 5th grade team - limited to participation in two tournaments
 - 6th grade team - limited to participation in two tournaments
 - 7th grade team - limited to participation in three tournaments
 - 8th grade team - limited to participation in three tournaments
6. A "match" shall consist of three "games" or the "best two out of three" games." The maximum number of matches a team may participate in during one day is three.





SPECIFIC REGULATIONS

CHEERLEADING R 6145.28

1. Pupils in grades 5, 6, 7, and 8 shall be eligible to participate in cheerleading, on the varsity of junior varsity squad team.
2. Cheerleading is classified as an activity, and as such is subject to the authority and supervision of the school principal. Where a pupil chooses to play a competitive sport and be a cheerleader, close communication should be maintained between teachers, parents, coaches and cheerleader advisors as to the appropriate amount of time that should be spend at practices, games, competition, etc. so that sufficient time can be given to homework and family responsibilities.
3. No cheerleading team may use pyramids in any routine. According to the WIAA, a pyramid is defined as "any formation in which a person(s) is supported in whole or in part by another person(s) who is not in contact with the floor". In addition, standing shoulder mounts are not permitted; sitting shoulder mounts are permitted. Basket tosses and similar high-risk maneuvers also are not allowed. The insurance carrier has been advised of these rules, and coverage may not be in effect if these rules are violated.
4. Provision may be made by the school to provide an alternative activity, such as a pom-pom team, for those pupils who are not participating in cheerleading.
5. Cheerleaders must abide by the following specific rules as found in General Regulation 6145.2: #1,7,8,9,12,13,15 and 24.





This publication, dated July 1, 2009, supersedes all previous publications of the Policies and regulations along with any interpretations, revisions and waivers of the Office for Schools, Archdiocese of Milwaukee.

** These policies and regulations correspond to Archdiocesan Athletic Policies 6145-6145.28, found In the Official Policy Manual of the Office for Schools.*

To insure uniformity the final interpretation of these Policies and Regulations rests with the Office for Schools, Archdiocese of Milwaukee.

Archdiocese of Milwaukee